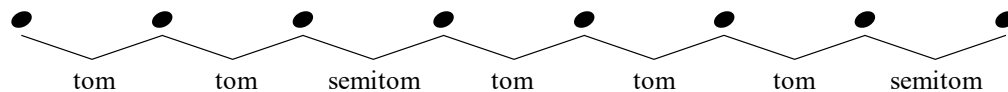


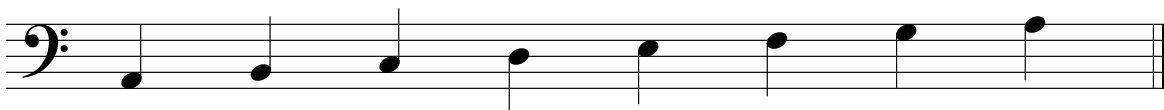
# Escala Maior 1c - $\text{b}$ :

Todas as escalas maiores são formadas com o seguinte padrão de tons e semitons:



Adicione sustenidos ou bemóis nos exercícios abaixo para criar escalas maiores.  
Use o padrão de tons e semitons para determinar quais acidentes são necessários acrescentar.

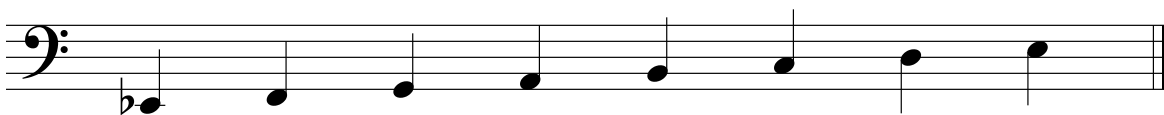
1



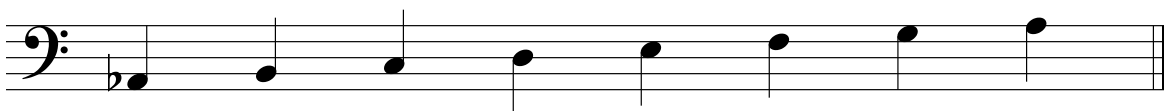
2



3



4



5



6

